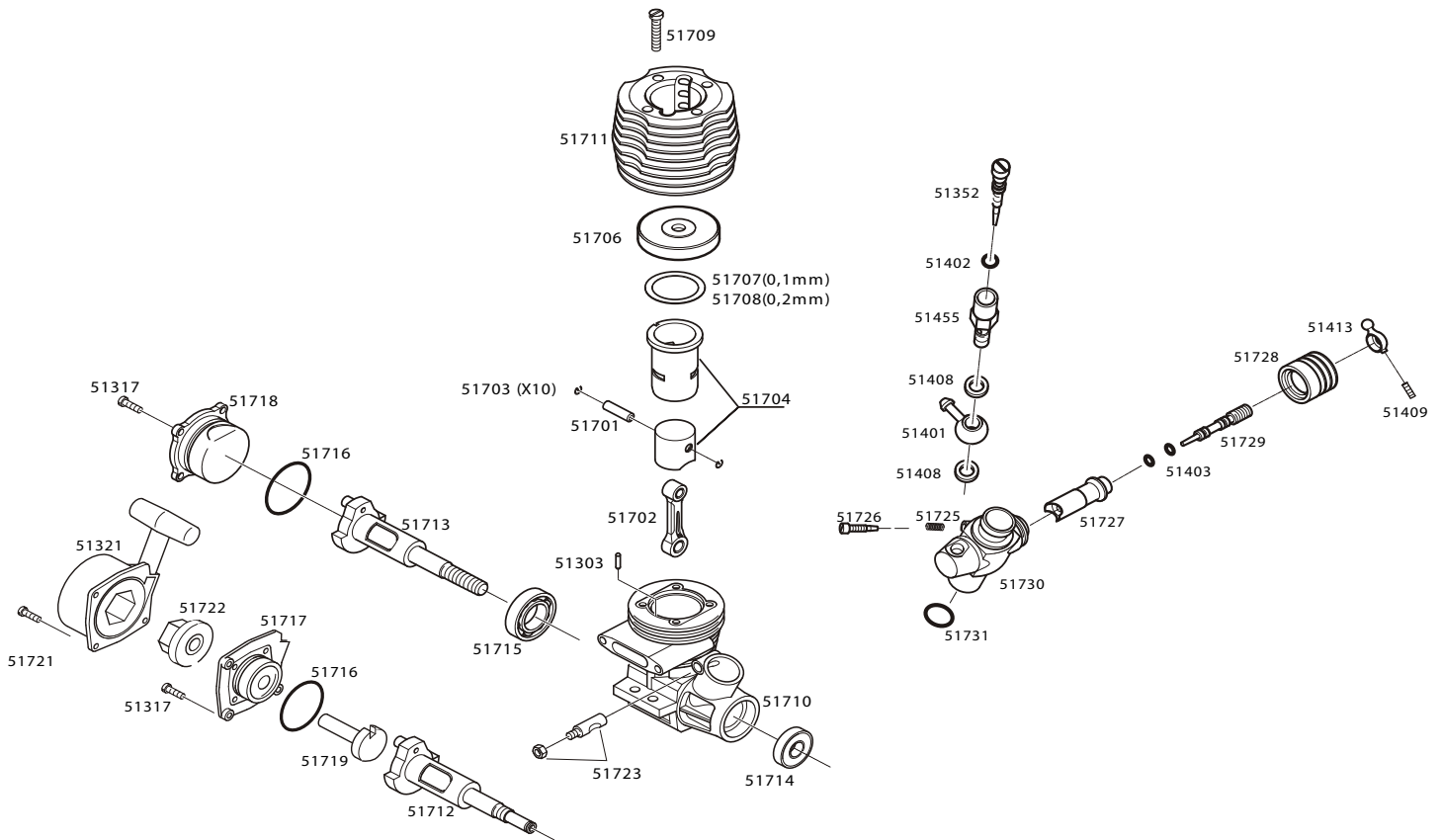




Picco .085Tcc

51118 Picco .085Tcc w/o ps

51119 Picco .085Tcc Pull Start



Picco .085Tcc Engine Parts

51401	6035	FUEL FITTING	4.95	51703	1374	WRIST PIN RETAINER 10PCS .08T	9.95
51402	6070	O-RING, MAIN NEEDLE, 2PCS	1.95	51704	1376	CYLINDER/PISTON .08T	89.95
51352	6321	MASTER NEEDLE .26MAX, .08T	2.95	51706	2361	HEAD BUTTON .08T	9.95
51403	6080	O-RING, LOW END NEEDLE, 4x2mm 6 PCS.	4.95	51707	2381	HEAD SHIM .1mm .08T	1.50
51408	6175	WASHER, ALUM. 2 PCS.	1.95	51708	2382	HEAD SHIM .2mm .08T	1.50
51409	6186	SET SCREW 3x3mm	0.95	51709	2366	SCREWS, HEAD .08T 4PCS	4.95
51413	6291	BALL JOINT CAP	12.95	51710	2364	CRANKCASE .08T	97.95
51455	6465	MASTER NEEDLE HOUSING	6.50	51711	2365	HEAD BLUE .08T	43.95
51725	6115	AIR SCREW SPRING .08T	1.95	51712	3224	CRANKSHAFT PULLSTART .08T	56.95
51726	6131	CARB. AIR SCREW SLIDER .08T	1.95	51713	3229	CRANK NON P/S .08T	56.95
51727	6334	CARB. DRUM SLIDER .08T	16.95	51714	3235	BALL BEARING, FRONT .08T	14.95
51728	6368	SILICONE RUBBER PROTECT	4.95	51715	3236	BALL BEARING, REAR .08T	15.95
51729	6367	LOW END NEEDLE	9.95	51716	3226	O-RING PLATE 5PCS. .08T	1.95
51730	6333	CARB. BODY .08T	76.95	51717	5159	REAR COVER FOR PULLST ART .08T	23.95
51731	6310	O-RING, CARB (5PCS)	2.95	51718	5169	PLATE .08T	14.95
51303	1021	REF. PIN FOR CYLINDER	1.95	51719	5167	PULLSTART SHAFT CARRIER	11.95
51317	6042	SCREWS, REAR COVER, 4PCS.	4.95	51721	6343	SCREWS FOR PULLST ART .08T 3PCS	1.95
51321	TS1A-3	PULLSTART	18.95	51722	8006	COMPLETE BUSHING	30.95
51700	5162	REAR COVER, NO CUT, .08T	16.95	51723	5140	CARB. LOCKING PIN .08T	3.95
51701	1373	WRIST PIN .08T	7.95	51724	6332	CARB. COMPLETE .08T	82.95
51702	1378	CONNECTING ROD .08T	33.95				